

PACK & SEND



***We are extremely proud of our work
and the customer feedback we've
received...***

We Send Anything, Anywhere



The PACK & SEND Story



PACK & SEND was founded in Parramatta, Australia in 1993 and opened its first UK Store in Reading in January 2009, with the Guildford store (shown on the right) opening in summer 2014.

The vision was to create a one stop shop to pack and deliver anything, anywhere, for anyone.

In the global logistics market of today where the individual can sometimes get overlooked, PACK & SEND proudly lives up to the claim that 'we know our customers names'.

It delivers a level of personal and flexible service to its customers' packaging and freight forwarding requirements that is unparalleled in the sector.



We Send Anything, Anywhere



Antique London Trolley Bus



Picked up from Bonham's, protected with Cell-Aire, AirCap, and Foam Cushioning, placed in a custom made wooden crate and shipped by road to Spain.



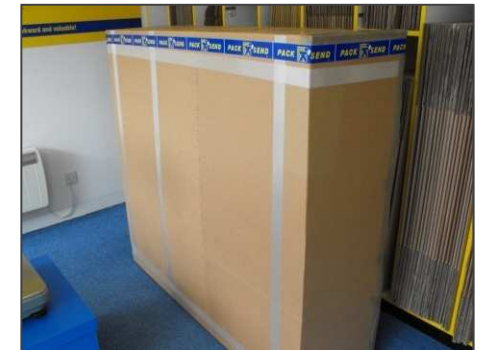
We Send Anything, Anywhere



MR2 Hardtop



MR2 Hardtops, bought on eBay in the UK and packed in custom made cartons protected with foam cushioning and shipped by air to buyers in the US.



We Send Anything, Anywhere



Garry Shead Painting



Garry Shead painting packed in a custom carton, Cell-Aire and AirCap and shipped by air to Sotheby's in Sydney for auction.



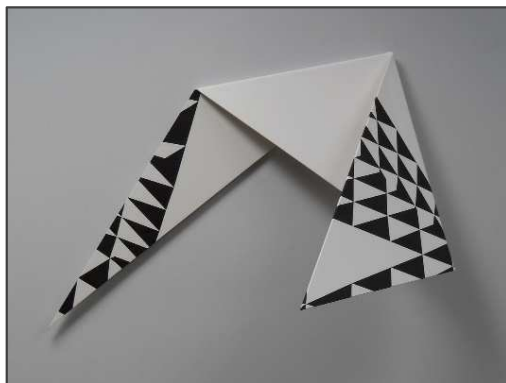
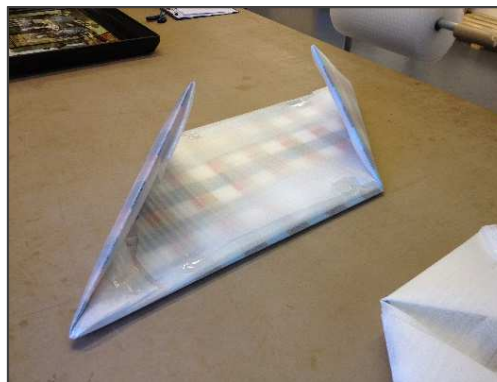
We Send Anything, Anywhere



3D Artwork



3D artwork was wrapped in Cell-Aire and AirCap before being packed into a custom designed wooden crate using Stratocell to hold the pieces in the correct position



We Send Anything, Anywhere



HRH Prince William's Pedal Cars



Two of HRH Prince Williams electric pedal cars packed in wooden crates, protected with foam cushioning, and shipped by road to Montreux for a charity auction.



We Send Anything, Anywhere



Meccano Ferris Wheel



A Meccano Ferris Wheel picked up from the seller in France, braced and cushioned in foam before being packed in a custom made wooden crate and shipped by sea to the buyer in Australia.



We Send Anything, Anywhere



Antique Factory Clock



A late 19th century factory clocking-in clock protected in Cell-Aire anti static wrap and foam cushioning, packed in a wooden crate and shipped by road to the buyer in Spain.



We Send Anything, Anywhere



Mars Ice Cream Bars



We were approached by a very wealthy individual who was holding a dinner party and wished to serve their guests a Mars Ice Cream Bar for dessert. The dinner party was in Sydney, in 48 hours.

The bars were picked up within two hours, packed in 15 kilos of dry ice, cleared through customs and on a flight that same night. They arrived in Sydney 24 hours later, still frozen and the dinner party went extremely well!



We Send Anything, Anywhere



Jenny's Favourite Teddy Bear



Little Jenny had left her favourite teddy bear on the Qantas aircraft she and her family had travelled back to the UK on. PACK & SEND were happy to collect it from Heathrow, package it, and send it to Jenny to re-unite her with her prized possession.

As a result we are now proud to have Qantas as one of our Corporate customers and send thousands of items of lost property back to their customers each year.



We Send Anything, Anywhere



What Our Customers Have Said



“...he had a fantastic knowledge of the issues which we could face with our delivery and the ways in which we could try to reduce them. He was incredibly efficient and so caring & understanding towards the concerns we had. He did everything within his efforts (and more) to ensure the delivery made it safely and promptly to its destination...”

“...we have recently used the Reading based office in the UK to send an important package to New Zealand and as we were so overwhelmed with the quality of the service we felt it was important to send our praise on to you...”

“...we have never written to a company before for this reason, so it really does show how impressed we have been. We think he is a fantastic asset to your company and it was an absolute pleasure to meet him. We will pass on our positive experience with the company to our friends and family...”

“...having found it difficult to find a company to send this liquid package and given little advice about who may be able to help by other companies, we found PACK & SEND in our local telephone directory. The service we received as soon as we walked in the door was second to none. It is rare in the UK to experience such a fantastic service these days...”

We Send Anything, Anywhere



PACK & SEND Guildford



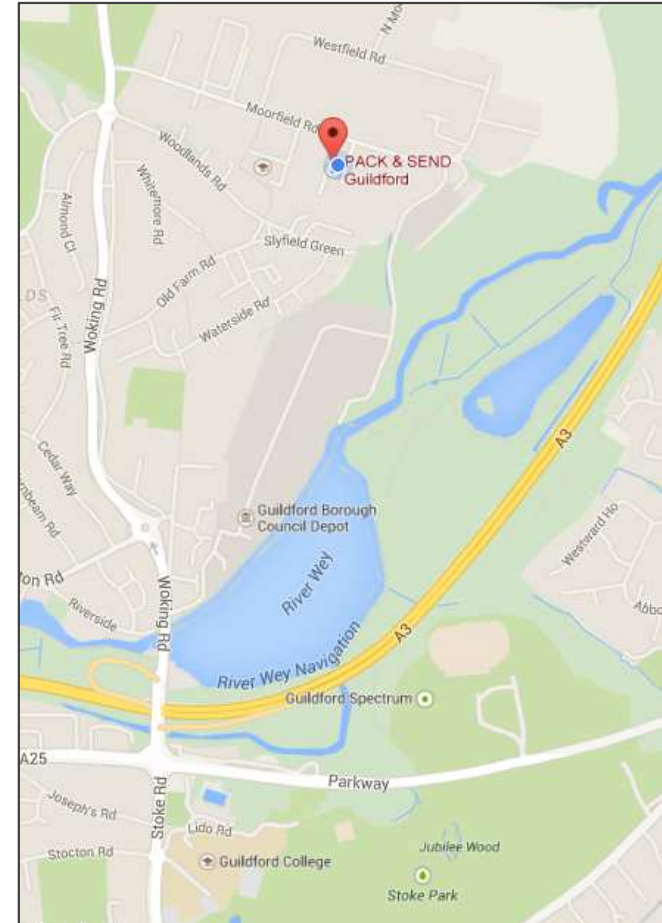
PACK & SEND Guildford is conveniently situated on the Slyfield Industrial Estate close to both Guildford town centre and main access roads including the A3.

To find the store come in to Slyfield Industrial Estate and continue on Moorfield Road until you see Big Yellow Storage on your right, and then turn immediately right after that into Enterprise state comprised of distinctive units in grey with yellow doors. The store is located in the second row of units at the back/right-hand corner and should be clearly.

Parking is available in front of the store.

***10-11 Enterprise Estate
Slyfield Industrial Estate
Moorfield Road
Guildford
Surrey
GU1 1RB***

***tel: +44 (0)1483 338 799
email: guildford@packsend.co.uk
web: www.packsend.co.uk/guildford***



We Send Anything, Anywhere

